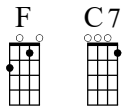
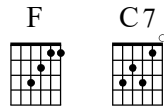


I've Got a Car, It's Made of Tin

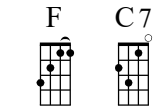
Traditional



ukulele



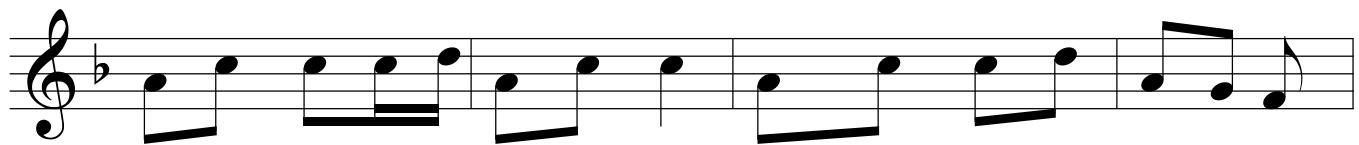
guitar



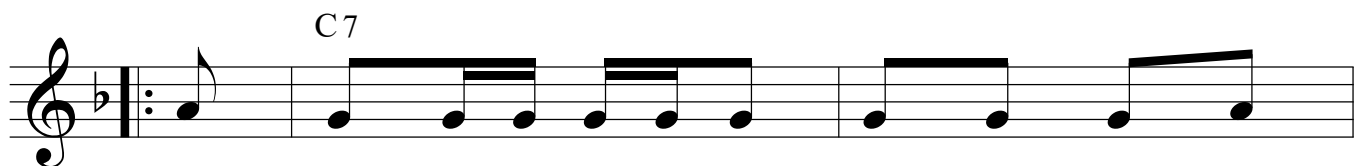
baritone ukulele



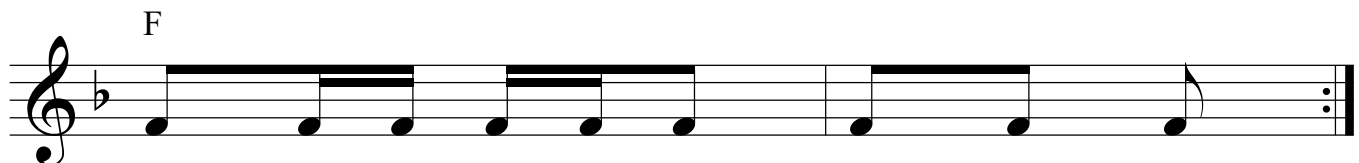
I've got a car, it's made of tin, No-bo-dy knows what shape it's in.
Ro-me - o and Ju - li - et, On the__ bal - co - ny they set.
Pep-si__ Co - la came to town, Co-ca__ Co - la shot him down.



Got four wheels and a run-ning board, It's a four-door, it's a Ford,
Ju - li - et has__ got a date, Shake-speare's co - min' half past eight.
Doc-tor Pep - per__ fixed him up, Now we all drink Se-ven Up.



Honk, honk, rat - tle rat - tle, toot crash, beep beep, Honk,



honk, rat - tle rat - tle, toot crash, beep beep!